

## Case Report

# An extremely rare culprit for a common crime: A case report on gastric duplication cyst associated with accessory pancreatic lobe

Sana Ashraf Khan<sup>1</sup>, Hemagini Thakkar<sup>1</sup>, Zillani Alam<sup>1</sup>, Kritika Sunil Bhatia<sup>1</sup>

<sup>1</sup>Department of Radiology, Seth G. S. Medical College and KEM Hospital, Mumbai, Maharashtra, India.

### \*Corresponding author:

Kritika Sunil Bhatia,  
Department of Radiology,  
Seth G. S. Medical College  
and KEM Hospital, Mumbai,  
Maharashtra, India.

[kritika\\_bhatia@live.com](mailto:kritika_bhatia@live.com)

Received: 25 March 2024  
Accepted: 29 April 2024  
Epub Ahead of Print: 18 July 2024  
Published: 12 January 2026

DOI  
10.25259/CRCR\_38\_2024

Quick Response Code:



## ABSTRACT

A 19-year-old 4-week postpartum woman came with acute onset pain in the abdomen for 2 days. She had similar complaint in her 7<sup>th</sup> antepartum month for which she had undergone a magnetic resonance imaging (MRI) examination elsewhere which was reported as pancreatic pseudocyst. Ultrasonogram of epigastric region revealed a cystic lesion with echogenic content and wall showing gut signature. Contrast-enhanced computed tomography scan confirmed the cystic lesion and additionally showed an accessory pancreatic lobe. MRI demonstrated the aberrant duct within accessory pancreatic lobe and its communication with main pancreatic duct.

**Keywords:** Accessory pancreatic lobe, Aberrant duct, Gastric duplication cyst

## INTRODUCTION

The accessory pancreatic lobe is an extremely rare congenital anomaly defined as an accessory lobe of pancreatic tissue originating from main pancreatic gland and containing aberrant duct.<sup>[1]</sup> This anomaly is usually associated with gastric duplication cyst and the aberrant duct communicates with the main pancreatic duct (PD) and the duplication cyst. The gastric duplication cyst contains ectopic pancreatic tissue or gastric mucosa which is prone to hemorrhage and block aberrant duct leading to pancreatitis.

## CASE REPORT

A 19-year-old, 4-week postpartum woman came with acute onset pain in the abdomen for 2 days. She had similar complaint in her 7<sup>th</sup> antepartum month for which she had undergone an magnetic resonance imaging (MRI) examination elsewhere. Ultrasonography, contrast-enhanced computed tomography (CT) and MRI examination were performed for this patient.

## Laboratory findings

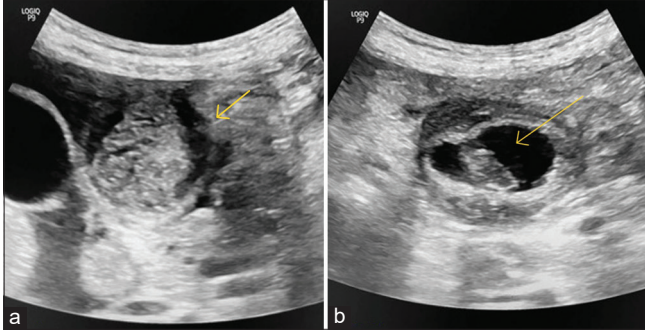
Increased levels of serum and ascitic fluid amylase. Ascitic fluid amylase up to 25,000 IU. Thus, confirming the diagnosis of pancreatitis.

This is an open-access article distributed under the terms of the Creative Commons Attribution-Non Commercial-Share Alike 4.0 License, which allows others to remix, transform, and build upon the work non-commercially, as long as the author is credited and the new creations are licensed under the identical terms.

©2026 Published by Scientific Scholar on behalf of Case Reports in Clinical Radiology

## Imaging findings

Ultrasonogram of epigastric region reveals a cystic lesion with echogenic content within and wall showing the gut signature. Adjacent to it is the accessory pancreatic lobe with a prominent ductal system [Figure 1].



**Figure 1:** (a and b) Ultrasonogram of epigastric region reveals a cystic lesion with echogenic content within (yellow arrow in b) and wall showing the gut signature. Adjacent to it is the accessory pancreatic lobe with a prominent ductal system (yellow arrow in a).

Contrast-enhanced CT scan of the abdomen reveals a well-defined cystic lesion with a multi-layered wall in the greater omentum [Figure 2a]. It has an intensely enhancing inner wall with the breach in its superolateral aspect [Figure 2b]. On a plain scan, there is a hyperdense blood clot within the cystic lesion [Figure 2c]. The cyst is sharing a wall with the greater curvature of the stomach [Figure 2d]. The pancreatic body and tail are bulky with prominent main PD and

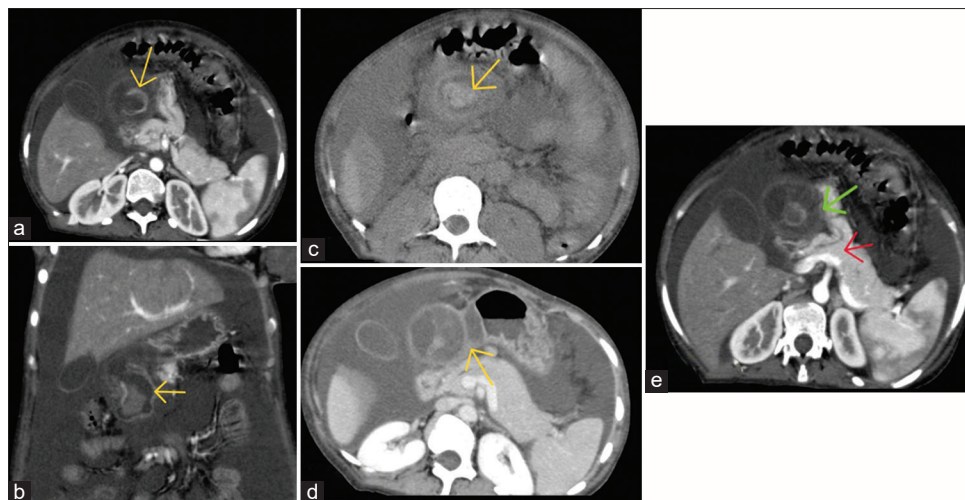
ascites. Accessory pancreatic lobe is seen communicating with the main pancreas. It contains an aberrant duct which communicates with the main PD and cystic lesion [Figure 2e].

T2-weighted MRI images of the abdomen confirmed the presence of a T2 hyperintense cystic lesion with a multi-layered wall. A breach is seen in its superolateral aspect. 3D image shows the aberrant duct. There is a T2 hypointense content within the cyst suggestive of a blood clot [Figure 3]. As compared to MRI performed in the 7th antenatal month, there is no change in the size of the cyst and no T2 hypointense blood clot within.

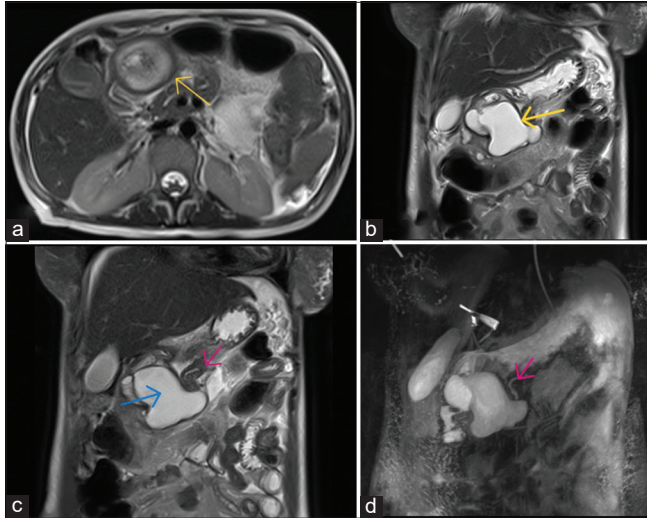
A radiological diagnosis of accessory pancreatic lobe with gastric duplication cyst with mucosal breach and intracystic hemorrhage leading to pancreatitis was made.

## Follow-up

The patient had a poor nutritional built and unstable hemodynamics, so surgery was deferred. Instead, she was taken up for endoscopic retrograde cholangiopancreatography and PD stenting during which she succumbed. She was taken up for post-mortem examination which revealed the ruptured duplication cyst with accessory pancreatic lobe. Postmortem and, therefore, histopathology images are not available as the patient's relative was not consenting.



**Figure 2:** (a and b) Contrast-enhanced computed tomography scan of the abdomen reveals a well-defined cystic lesion with a multi-layered wall in the greater omentum. It has an intensely enhancing inner wall (yellow arrows) with the breach in its superolateral aspect. (c) On a plain scan, there is a hyperdense blood clot (yellow arrow) within the cystic lesion. (d) The cyst is sharing wall (yellow arrow) with the greater curvature of the stomach. (e) Accessory pancreatic lobe is seen communicating with the main pancreas. It contains an aberrant duct which communicates with the main pancreatic duct (red arrow) and cystic lesion (green arrow).



**Figure 3:** (a) Axial section of T2-weighted image of magnetic resonance imaging of the abdomen confirms the presence of T2 hyperintense cystic lesion with multilayered (T2 hyperintense-hypointense-hyperintense) wall (yellow arrow). (b) Coronal T2-weighted section shows that the cyst is sharing wall with the greater curvature of stomach (yellow arrow). A breach is seen in its superolateral aspect. (c) Coronal T2-weighted section shows the accessory pancreatic lobe with the aberrant duct (pink arrow). There is T2 hypointense content within the cyst suggestive of blood clot (blue arrow). (d) Coronal 3D image shows the aberrant duct (pink arrow).

## DISCUSSION

Duplications of gastrointestinal organs are very rare congenital abnormalities.<sup>[2]</sup> This gastric anomaly in association with accessory pancreas and pancreatic duplications is rarely reported.<sup>[3]</sup> The hypothesis for its development states that there is failure of endodermal-ectodermal separation in 3<sup>rd</sup> fetal week.<sup>[4]</sup> This leads to adhesions between them that persist as neurenteric band. This band causes traction along dorsal part of foregut which leads to formation of duplication cyst. As pancreas as well develops from the bud of foregut, traction along the bud due to neurenteric band causes extension of pancreatic tissue and gives rise to an accessory pancreatic lobe.

The gastric duplication cyst usually arises from the greater curvature or posterior wall of stomach. The accessory pancreatic lobe usually stems from neck or body of pancreas and follows ventral direction toward the gastric duplication.<sup>[5]</sup>

The gastric duplication cyst comprises the inner epithelial lining and outer smooth muscle coat, blood supply originating from gastric vessels, and continuity with gastric wall (luminal continuity may or may not be present).<sup>[1]</sup>

The cyst mucosa can be gastric mucosa or ectopic pancreatic tissue. This makes it prone to ulceration and bleeding.

Recurrent acute pancreatitis at a younger age is the typical presentation, precipitated by –

- Obstruction of PD by the blood of intracystic hemorrhage with subsequent hemoductal pancreatitis.<sup>[6]</sup>
- Mucoïd secretions from the cyst with subsequent stasis of pancreatic juice.<sup>[7]</sup>

Surgical resection of cyst with accessory pancreatic tissue is the treatment of choice.

## DIFFERENTIAL DIAGNOSIS

The most common differential diagnosis for a cystic lesion in and around pancreas in a case of pancreatitis is pseudocyst, hence, Table 1 provides points with help differentiate pseudocyst from duplication cyst.

**Table 1:** Differentiation of pancreatic pseudocyst from a duplication cyst

Pancreatitis with pseudocyst	Gastric duplication cyst
Wall of the pseudocyst will show delayed enhancement as it is made of fibrous tissue	Inner mucosal wall shows hyperenhancement
Size will decrease on follow-up scan	Size remains constant

## CONCLUSION

This case teaches us the possibility of rare congenital causes of pancreatitis. However, such rare causes are to be considered after ruling out the common causes such as history of alcoholism and gall stones. The ductal system evaluation is extremely important in pancreatitis using magnetic resonance cholangiopancreatography to loom for congenital anomalies of the ductal system.

## TEACHING POINTS

1. Ectopic pancreatic tissue in duplication cysts.
2. Walls of gastric and intestinal duplication cysts show gut signature.

## MCQs

1. Arterial hyperenhancement of cyst wall suggest the diagnosis of
  - a. Pancreatic pseudocyst
  - b. Duplication cyst
  - c. Both
  - d. None

Answer Key: b

2. Decrease in size on follow-up scan suggest the diagnosis of
  - a. Pancreatic pseudocyst

- b. Duplication cyst
- c. Both
- d. None

Answer Key: a

3. The presence of multi-layered wall is seen in pseudocyst
- a. True
  - b. False

Answer Key: b

**Ethical approval:** Institutional Review Board approval is not required.

**Declaration of patient consent:** The authors certify that they have obtained all appropriate patient consent.

**Financial support and sponsorship:** Nil.

**Conflicts of interest:** There are no conflicts of interest.

**Use of artificial intelligence (AI)-assisted technology for manuscript preparation:** The authors confirm that there was no use of artificial intelligence (AI)-assisted technology for assisting in the writing or editing of the manuscript and no images were manipulated using AI.

## REFERENCES

1. Rousek M, Kachlik D, Nikov A, Pintova J, Ryska M. Gastric duplication cyst communicating to accessory pancreatic lobe:

A case report and review of the literature. *World J Clin Cases* 2018;6:1182-8.

2. Izumi H, Yoshii H, Abe R, Mukai M, Nomura E, Ito H, *et al.* Successful laparoscopic resection for gastric duplication cyst: A case report. *J Med Case Rep* 2019;13:240.
3. Chattopadhyay A, Mitra SK, Dutta S, Chakraborty H. Gastric, pancreatic, and ureteric duplication. *J Indian Assoc Pediatr Surg* 2010;15:25-7.
4. ROSSLE R. Rudolf Virchows lecture on general pathological anatomy and general pathology in the year 1852; in commemoration of Virchow's death 50 years ago (5 Sept. 1902); comments on the true history of disease]. *Virchows Arch Pathol Anat Physiol Klin Med* 1952;322:233-9.
5. Christians KK, Pappas S, Pilgrim C, Tsai S, Quebbeman E. Duplicate pancreas meets gastric duplication cyst: A tale of two anomalies. *Int J Surg Case Rep* 2013;4:735-9.
6. Longmire WP, Rose AS. Hemoductal pancreatitis. *Surg Gynecol Obstet* 1973;136:246-50.
7. Traverso LW, Damus PS, Longmire WP Jr. Pancreatitis of unusual origin. *Surg Gynecol Obstet* 1975;141:383-6.

**How to cite this article:** Khan SA, Thakkar H, Alam Z, Bhatia KS. An extremely rare culprit for a common crime: A case report on gastric duplication cyst associated with accessory pancreatic lobe. *Case Rep Clin Radiol.* 2026;4:35-8. doi: 10.25259/CRCR\_38\_2024